

## Inspection headlines

Pupils make good progress during their time at school. A well-taught and broad curriculum ensures that most pupils work at or above age-related expectations.

The school has an impressive climate for learning. Pupils' contributions in lessons are often thoughtful, sensitive and articulate.

Staff, parents and pupils speak warmly about the changes made to the school. Most staff are infected with the same desire to do their best for all pupils. They work very hard to achieve this.



**Ofsted**  
Good Provider

The governing body has an estimable set of skills and brings a sharp perspective to the work of the school. It is aware of its responsibilities and is determined to improve the school further.

A varied and interesting curriculum gives pupils ample opportunities to study a broad range of subjects. Pupils enjoy a rich diet of activities outside of lessons...

Pupils in the school feel safe. They know whom to turn to if they encounter any difficulty. They are confident about raising any issues they have. Bullying is rare. It is taken seriously and dealt with firmly if it does occur.

Many teachers balance the development of pupils' subject knowledge, skills for learning and positive attitudes very skilfully. They blend the lesson objectives with the development of 'superhero learning traits' and promote pupils' understanding of the 'fruits of faith'.



Pupils are supported carefully when they arrive at the school. Effective liaison between most local schools helps to ensure that pupils settle into school well.

During their time at school, pupils develop into confident, hardworking and articulate pupils. They acquire good social skills, develop tolerance of others and are resilient.

The full report is available at:

<http://www.walkwoodms.worcs.sch.uk/Content/files/87ed-Walkwood%202018.pdf>

Dear God,  
I arise today, through  
God's strength to pilot me,  
God's might to uphold me,  
God's wisdom to guide me,  
God's eye to look before me,  
God's ear to hear me,  
God's word to speak for me,  
God's hand to guard me,  
God's shield to protect me,  
God's host to save me from snares  
of devils, from temptation and  
from everyone who shall wish me  
ill, afar and near.  
Amen.

This week's theme was:

**St Patrick**

If I have any worth, it is to live  
my life for God so as to teach  
these peoples; even though  
some of them still look down on  
me.

**St Patrick**

**Whole School Attendance – 95.32%**

**Whole School Target – 95.6%**

**26.02.18—02.03.18**

**Year 5 — 96.16%**

**Year 6 — 96.40%**

**Year 7 — 94.77%**

**Year 8 — 93.39%**



# For the week ahead



<b>The Fruit of Faith is:</b>	<b>Tolerance</b>	Be always humble, gentle, and patient. Show your love by being tolerant with one another. <i>Ephesians 4:2</i>
<b>The tutor group virtue:</b>	<b>Acceptance</b>	All that the Father gives me will come to me, and whoever comes to me I will never cast out. <i>John 6:37</i>
<b>The assembly theme:</b>	<b>Free Speech</b>	Do not take to heart all the things that people say, lest you hear your servant cursing you. Your heart knows that many times you yourself have cursed others. <i>Ecclesiastes 7:21-22</i>

## We ask your thoughts and prayers in the week ahead for:

<b>The weekend</b>	All the mothers that are being celebrated this Sunday	<b>Monday</b>	The homeless community in Red-ditch
<b>Tuesday</b>	The continued rehearsals of 'Seussical the Musical'	<b>Wednesday</b>	The prime minster as she makes decisions for the future
<b>Thursday</b>	Those that are participating in sports representing the school	<b>Friday</b>	Equality within all educational occupations.



## Year 8 Wales Trip to Snowdonia

[22<sup>nd</sup> - 25<sup>th</sup> June 2018]

Thank you to all parents/carers for paying the £50 deposit for the Year 8 Wales Trip and for those parents who have paid more than the £50 deposit required.

Just to remind you that the following payments need to be made:

**2<sup>nd</sup> payment of £100 required by Friday 9<sup>th</sup> March 2018.**

**Final payment of £120 required by Friday 4<sup>th</sup> May 2018.**

Smaller, more frequent payments can be made as long as the totals above are paid by the dates stated.

If you have any further queries regarding the trip, please do not hesitate to contact me at school.

Nearer the time I will be holding an information evening where you will be given a kit list and all other necessary information.

Mr P Jenkin  
(Trip Organiser)



## Living and Learning Together



Walkwood has a policy called 'Living and Learning Together' which covers aspects of behaviour as well as conduct of pupils connected to school. It is available, with our other policies, on the website, with the link being:

<http://www.walkwoodms.worcs.sch.uk/Content/files/7246-Living%20and%20Learning%20Together%202017.pdf>

# Science Club

In Science club this week we revisited stem learning - **Science Technology Engineering and Mathematics**.

The children were given a task of building a bridge strong enough to support a car (100 gram mass).

Engineers are needed in a diverse range of fields and projects and this task provided the opportunity to engage in a challenging activity that entailed creative thinking and practical skills.



## The Design of the Bridge

The city architect Horace Jones together with John Wolfe-Barry produced the design for the Tower Bridge. It was a mixture of a bascule and suspension bridge. Construction work started in 1886 and took eight years.



Sir Horace Jones

MyShared



## Year 6 Yorkshire Trip (Friday 18th May—Monday 21st May 2018)

Thank you to all parents/carers for paying the £50 deposit for the Year 6 Yorkshire Trip.

Just to remind you that the following payments need to be made:

2nd payment of £110 was required by 1st February, 2018

Final payment of £110 is required by 1st March, 2018

The total cost of the trip is £270.

**Mr N Sanders**  
**Trip Organiser**



### Contacting the School

You can contact the school via phone or by email through the website, but please allow 48 hours for staff to respond.



## Hockey and Rugby College Matches

The PE department run college matches twice a year, where pupils participate in a sporting activity against the other colleges in the school. Points are awarded to teams and these then go towards the college sports total at the end of the year.

College matches take place during lesson time where a whole year group will come down to PE at once. This may mean your child has two PE lessons that week and so will need to bring their kit in on two days.

Monday 19 <sup>th</sup> March	Lesson 2 and 3	Year 7
Monday 19 <sup>th</sup> March	Lesson 4 and 5	Year 6
Tuesday 20 <sup>th</sup> March	Lesson 2 and 3	Year 8
Wednesday 21 <sup>st</sup> March	Lesson 2 and 3	Year 5



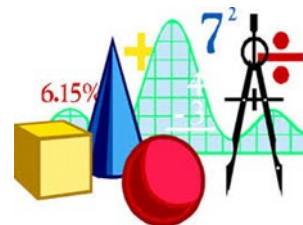
Please can you make sure pupils have correct PE kit for the following days. It is recommended that girls wear shin pads for Hockey and boys have boots and a gum shield (for 7/8 only due to tackling) for Rugby.

Thanks,  
PE Department





## Year 6 Maths Revision Sessions

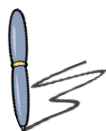


From January, the Maths department will be running revision sessions for Year 6 pupils to support them with their SATs in May. Pupils can decide which sessions they would benefit from. All Year 6 pupils have been given the timetable below so that they can select which sessions to attend.

Pupils will be awarded with an Epraise point for each session they attend. If pupils attend 15 sessions or more they will be awarded with the 'Commitment to Maths SATs' Epraise Achievement Badge.

Pupils should bring a packed lunch or meal deal to the relevant room at the start of lunchtime.

Date	Teacher and room	Topic
Tuesday 9 <sup>th</sup> January	SWa - Room 4	Calculating missing angles
Thursday 11 <sup>th</sup> January	NSa - Room 8	Rounding
Tuesday 16 <sup>th</sup> January	SWe - Room 4	Order of operations
Thursday 18 <sup>th</sup> January	LCu - Room 5	Properties of numbers-factors, primes, multiples...
Tuesday 23 <sup>rd</sup> January	LTh - Room 6	Ordering and comparing numbers
Thursday 25 <sup>th</sup> January	CLo - Room 6	2D shapes including circles and 3D shapes
Tuesday 30 <sup>th</sup> January	DBr - Room 5	Translation and reflection
Thursday 1 <sup>st</sup> February	NSa - Room 8	Negative numbers
Tuesday 6 <sup>th</sup> February	LTh - Room 6	Place value, including x and / by 10,100 & 1000.
Thursday 8 <sup>th</sup> February	LCu - Room 5	Units of measure and converting them
Tuesday 13 <sup>th</sup> February	DBr - Room 5	Measures word problems
Thursday 15 <sup>th</sup> February	LCu - Room 5	Interpreting graphs
Tuesday 27 <sup>th</sup> February	CLo - Room 6	Interpreting tables and mean
Thursday 1 <sup>st</sup> March	LCu - Room 5	Percentages of amounts
Tuesday 6 <sup>th</sup> March	SWe - Room 4	Comparing & ordering fractions (decimals and %)
Thursday 8 <sup>th</sup> March	HMa - Room 6	Equivalent fractions and simplifying fractions
Tuesday 13 <sup>th</sup> March	LTh - Room 6	Equivalent fractions/decimals and %'s
Thursday 15 <sup>th</sup> March	HMa - Room 6	Volume
Tuesday 20 <sup>th</sup> March	DBr - Room 5	Area of rectangles, triangles and parallelograms
Thursday 22 <sup>nd</sup> March	NSa - Room 8	Perimeter
Tuesday 27 <sup>th</sup> March	SWa - Room 4	Co-ordinates
Thursday 29 <sup>th</sup> March	TTo – Room 5	Algebra
Tuesday 17 <sup>th</sup> April	TTo – Room 5	+ and – fractions
Thursday 19 <sup>th</sup> April	LCu - Room 5	X and / fractions
Tuesday 24 <sup>th</sup> April	SWa – Room 4	Written X, including decimals
Thursday 26 <sup>th</sup> April	HMa – Room 6	Written division, including decimals
Tuesday 1 <sup>st</sup> May	TTo – Room 5	Written + and -, including decimals
Thursday 3 <sup>rd</sup> May	LCu - Room 5	Using the inverse
Tuesday 8 <sup>th</sup> May	CLo - Room 6	Word problems involving all operations
Thursday 10 <sup>th</sup> May	LCu - Room 5	Time problems and timetables



## Year 6 English Revision Sessions

From January the English department will be running revision sessions for Year 6 pupils to support you with your SATs in May. You can decide which sessions you would benefit from. Your English teacher will then award you with a merit on Epraise for each session you have attended. **If you attend 15 sessions, you will be awarded a 'Commitment to English SATs' Achievement Badge on Epraise.** You should bring a packed lunch or meal deal to the relevant room at the start of lunchtime.

Date	Teacher/Rm	Topic
Wednesday 10 <sup>th</sup> January	MJO R18	Prefix/suffix/root words
Friday 12 <sup>th</sup> January	MJO R18	Conjunctions subordinating & coordinating
Wednesday 17 <sup>th</sup> January	TPO R18	Sentence types (command, exclamation, question, statement)
Friday 19 <sup>th</sup> January	RSH R15	Verb subject object
Wednesday 24 <sup>th</sup> January	LBA R19	Colons to introduce a list or another clause
Friday 26 <sup>th</sup> January	ZBI R18	Semi-colons to separate longer items in a list
Wednesday 31 <sup>st</sup> January	NHU R15	Adverbs of time
Friday 2 <sup>nd</sup> February	AGA R17	Semi-colons to separate main clauses
Wednesday 7 <sup>th</sup> February	PCO R16	Inverted commas and their functions
Friday 9 <sup>th</sup> February	CJO R16	Progressive tenses
Wednesday 14 <sup>th</sup> February	TPO R18	Hyphens and their uses
Friday 16 <sup>th</sup> February	RSH R15	Commas to mark clauses
Wednesday 28 <sup>th</sup> February	LBA R19	Modal verbs
Friday 2 <sup>nd</sup> March	AGA R17	Reading: making an inference
Wednesday 7 <sup>th</sup> March	MJO R18	Standard English
Friday 9 <sup>th</sup> March	ZBI R18	Relative clauses
Wednesday 14 <sup>th</sup> March	MJO R18	Pronouns & possessive pronouns
Friday 16 <sup>th</sup> March	CJO R16	Determiners
Wednesday 21 <sup>st</sup> March	TPO R18	Simple forms of past, present & future tenses
Friday 23 <sup>th</sup> March	CJO R18	Adverbs of place
Wednesday 28 <sup>th</sup> March	LBA R19	Main & subordinate clauses
Wednesday 18 <sup>th</sup> April	NHU R15	Apostrophes for possession
Friday 20 <sup>th</sup> April	ZBI R18	Synonyms & antonyms
Wednesday 25 <sup>th</sup> April	PCO R16	Reading: making a prediction
Friday 27 <sup>th</sup> April	TPO R18	Adverbs of manner
Wednesday 2 <sup>nd</sup> May	CJO R16	Subjunctive form
Friday 4 <sup>th</sup> May	RSH R15	Active & passive voice
Wednesday 9 <sup>th</sup> May	RBR R16	Contractions
Friday 11 <sup>th</sup> May	LST R16	Reading: retrieving relevant information





# Top Readers for 8th February 2018 - 8th March 2018

Congratulations to:

## Top Girl

Enya Hussain (Year 7 - BCLO) - who has read an incredible 840,319 words

## Top Boy

Kelby Harrison (Year 8 - MMMG) - who has read a fantastic 465,708 words



Keep reading Walkwood, next week it could be YOU .....

Here is the link to enable pupils to do a quiz at home

<https://ukhosted23.renlearn.co.uk/2250823>



**Afterschool rehearsals - 3:30-5:15 in the Hall.**

**Tuesday 13<sup>th</sup> March** – WHOLE CAST – EVERYONE

**Thursday 15<sup>th</sup> March** – WHOLE CAST - EVERYONE



### Important Information/Dates:

- A reminder that Tuesday and Thursday after school rehearsals will finish at the slightly later time of **5:15pm**.
- There will be an important final dress rehearsal for everyone to attend on **Sunday 25<sup>th</sup> March. This will start at 2pm and finish at approx 5:30pm**. This will be for a final run through of the whole show.
- Other information for the cast will be given out to them nearer the time.

### Performances/Tickets:

- Performances are on Monday 26<sup>th</sup>, Tuesday 27<sup>th</sup> and Wednesday 28<sup>th</sup> March at 7:30pm.
- Tickets cost £5.00 each
- Tickets are now on sale!!!  
Tickets are available at lunchtime from Mrs Cull/Mrs Timmins in the Humanities area or via contacting the school office.

### Costumes:

- All performers will have been spoken to about their costumes and a lot of work has been going on behind the scenes to organise these.
- If your child is providing part of their costume then this needs to have been brought into school in a plastic bag, with their name clearly on the front and taken to Mrs Harris/Mrs Minton in the textiles room.
- All costumes should now be in school, so that we can see what else we need to provide/supply for children.

### Production Team

**Mrs C Griffiths. Ms Tomes, Miss Cowles.**



# Trips and Visits

## 2017 - 18



DATE	ACTIVITY	LOCATION	OPEN TO	COST	LEADER
<b>May</b>					
Fri 18—Mon 21	Outward Bound	Yorkshire	Y6	£ 270	Mr Sanders
<b>June</b>					
Wed 20—Fri 22	Arts and Theatres	London	Y8	£ 280	Rev Leach
Fri 22—Mon 25	Outward Bound	Wales	Y8	£ 270	Mr Jenkin
Fri 22— Mon 25	Outward Bound	Brecon Beacons	Y5	£ 155	Mr Macdonald / Mrs Cull



# Clubs and Activities Spring Term 1 2018

## starting 9th January 2018



	Before School 7:45am – 8:45am	Lunchtime 12.35 – 1.20pm	After School 3:30pm – 4:45pm
<b>Monday</b>	<p>Homework Club Library</p> <p>Orchestra Music Room 8.45-9.30am (CGR)</p>	<p>KS3 Art club starting 18<sup>th</sup> September (ECO)</p> <p>Monday lunchtime DT block Movie club all years (AMI)</p> <p>Gardening Club Textiles room At the start of lunch (STA)</p> <p>Maths Club for KS2 and KS3 Room 6 (HBA and LTH)</p>	<p>Homework Club Library 3.30–4.30pm</p> <p>Indoor Sports Club (benchball, bench hockey, dodgeball, seated volley ball mixture) all years 3.30-4.45pm (DPA and NFR)</p>
<b>Tuesday</b>	<p>Homework Club Library</p>	<p>DT Club in DT block All years (AMI)</p> <p>KS2 Art Club Art Room (ECO)</p> <p>Card making club <span style="color: red;">(invite only)</span> Art Room (STA)</p>	<p>Homework Club Library 3.30–4.30pm</p> <p>Year 5/6 Science club 3.30-4.30pm Lab 1 JHD Starts 12<sup>th</sup> September</p> <p>Seussical the Musical Rehearsal 3.30-5.15pm Hall (TTO, CGR, ECO)</p> <p>Year 5 Boys Football 3.30-4.45pm (SWa) Until Easter</p>
<b>Wednesday</b>	<p>Homework Club Library</p>	<p>Signing Club (All year groups) Textiles Room JHA</p> <p>Silent Reading Club Room 19 (LBA)</p> <p>‘Colouring for Mindfulness’ Club on Wednes- days, Room 9, from 12.50-1.20pm (MMG, PCO)</p>	<p>Homework Club Library 3.30–4.30pm</p> <p>Cooking Club 3.30–4.45pm (DSL) <span style="color: red;">(rota of when you are cooking will be con- firmed)</span></p> <p>8 and 7 Boys Basketball (CHU/SWA) 3.30-4.45pm</p> <p>KS2 Netball Club 3.30-4.45pm (KRE/HTR) Until Easter</p>



## Clubs and Activities Spring Term 1 2018 starting 9th January 2018 (continued)



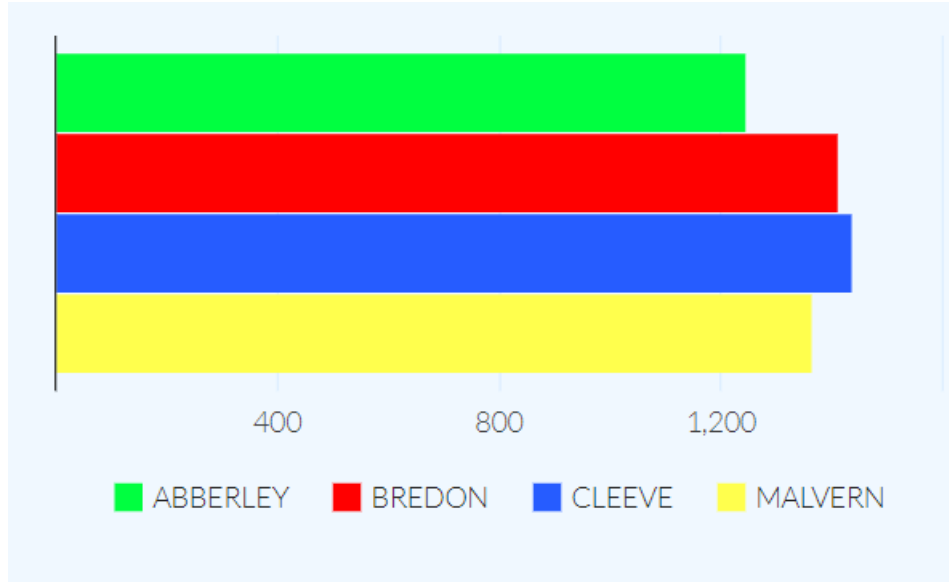
<b>Thursday</b>	Homework Club Library	Choir (all year groups) Music Room 12.50-1.20pm (CGR)  Green Ambassadors Club All years <b>Week 2 only</b> 12.35 – if you need a lunch pass collect from MBI	Homework Club Library 3.30–4.30pm  Seussical the Musical Rehearsal 3.30-5.15pm Hall (TTO, CGR, ECO)
<b>Friday</b>	Homework Club Library	EAL club Friday lunch time ( <b>the first Friday of every month</b> ). <b>Starts 5<sup>th</sup> January in the LRC with ZBi</b> For anyone who speaks English as an additional language and your friends.  Bring your lunch along.	Homework Club Library 3.30–4.30pm  Rec Football all years 3.30-4.45pm Until Easter  KS3 Netball Club 3.30-4.45pm Until Easter



# Epraise Update



## Points This Week: By College



## Top Ten Points Scorers

1. 🍌 Benj Whitehouse (ALBA) (24)
2. 🍌 Laiba Rahouf (CCMI) (21)
3. 🍌 Grace Fletcher (CCMI) (20)
3. 🍌 Nathan Smyth (BHLL) (20)
3. 🍌 Samantha Goode (CCHU) (20)
6. 🍌 Harry Thompson (CCMI) (19)
6. 🍌 Elliot Hill (BHLL) (19)
8. 🍌 Danny Price (MKRE) (18)
8. 🍌 Charlie Harris (ALBA) (18)
8. 🍌 Adrian Lyszcz (CCMI) (18)



# Looking ahead



	Date	Event
2 0 1 8	Monday 26 - Wednesday 28 March	School Production
	Thursday 29 March	<b>End of term</b>
	Monday 16 April	First day of the Summer Term
	Wednesday 16 May	Y5 Brecon Beacons information evening 6.30 pm
	Monday 28 May—Friday 1 June	<b>Half-Term</b>
	Monday 4 June	Staff Development Day
	Thursday 7 June	Y5 & Y7 Parents' Evening 4.00—7.00 pm
	Wednesday 13 June	Y5 & Y7 Parents' Evening 4.00—7.00 pm
	Monday 9 July	Parent Focus group 6 pm
	Tuesday 24 July	<b>End of Term</b>
	Monday 3 & Tuesday 4 September	Staff Development Days
	Wednesday 5 September	First day of the Autumn Term
	Friday 26 October	Staff Development Day
	Monday 29 Oct to Friday 2 November	<b>Half term</b>
	Friday 21 December	<b>End of Term</b>

2 0 1 9	Monday 7 January	Staff Development Day
	Tuesday 8 January	First day of the Spring Term
	Monday 18—Friday 22 February	<b>Half Term</b>
	Friday 12 April	<b>End of Term</b>
	Monday 29 April	First day of the Summer Term
	Monday 27—Friday 31 May	<b>Half Term</b>
	Friday 19 July	<b>End of Term</b>